



**Paradise Lake “State of the Lake” (2017)
Report: Evaluation of Laminar Flow Aeration,
Bioaugmentation, and Biological Control for
Improvements to Paradise Lake, Emmet and
Cheboygan Counties, Michigan**



Note: This is a copyrighted report meant for the Paradise Lake riparians only. Any sharing of this report or reproduction requires approval by Restorative Lake Sciences.

**Paradise Lake “State of the Lake” (2017) Report:
Evaluation of Laminar Flow Aeration,
Bioaugmentation, and Biological Control for
Improvements to Paradise Lake, Emmet and
Cheboygan Counties, Michigan**



© Restorative Lake Sciences
18406 West Spring Lake Road
Spring Lake, Michigan 49456

Email: info@restorativelakesciences.com

Website: <http://www.restorativelakesciences.com>

Table of Contents

SECTION	PAGE
LIST OF FIGURES	4
LIST OF TABLES	5
1.0 PARADISE LAKE STATE OF THE LAKE SUMMARY	6
2.0 PARADISE LAKE WATER QUALITY DATA 2017	8
2.1 Water and Sediment Parameters Measured	8
2.1.1 Dissolved Oxygen	12
2.1.2 Water Temperature	12
2.1.3 Conductivity	13
2.1.4 pH	13
2.1.5 Secchi Transparency	13
2.1.6 Oxidative-Reduction Potential	13
2.1.7 Total Phosphorus and Total Nitrogen	14
2.1.8 Total Dissolved Solids	14
2.1.9 Total Alkalinity	14
2.1.10 Sediment Organic Matter	15
2.1.11 Chlorophyll- <i>a</i> and Algal Community Composition	15
2.2 Paradise Lake Aquatic Vegetation Data	16
2.2.1 Paradise Lake Aquatic Vegetation Sampling Methods	16
2.2.2 Paradise Lake Native Aquatic Vegetation	17
2.2.3 Paradise Lake Invasive (Exotic) Aquatic Vegetation	19
2.2.4 Assessment of Weevil Damage on EWM Stems	20
2.3 Paradise Lake Sediment Muck Reduction Data	24
3.0 2018 MANAGEMENT RECOMMENDATIONS	26
4.0 GLOSSARY OF SCIENTIFIC TERMS	27
5.0 SCIENTIFIC LITERATURE CITED	28

FIGURES

FIGURE	PAGE
Figure 1. Paradise Lake Water Quality/Sediment Sampling Locations (2017)	9
Figure 2. Map of Eurasian Watermilfoil Beds in Paradise Lake (2017)	20
Figure 3. Paradise Lake 2017 Aquatic Vegetation Biovolume Map	23
Figure 4. Paradise Lake 2017 Sediment Bottom Hardness Map	24

TABLES

TABLE	PAGE
Table 1. Lake Trophic Classification (MDNR)	9
Table 2. Deep Basin #1 Water Quality Data (2017)	10
Table 3. Deep Basin #2 Water Quality Data (2017)	10
Table 4. Deep Basin #3 Water Quality Data (2017)	10
Table 5. Deep Basin #4 Water Quality Data (2017)	11
Table 6. Paradise Lake Sediment Organic Matter Data (2017)	11
Table 7. Paradise Lake Phytoplankton Data (2017)	12
Table 8. Paradise Lake Native Aquatic Vegetation Data (2017)	18
Table 9. Paradise Lake West Basin Aquatic Vegetation Data (2017)	19
Table 10. Paradise Lake Weevil Stem Damage Data (2017)	22
Table 11. Changes in Paradise Lake Aquatic Vegetation Biovolume (2014-2017)	24
Table 12. Changes in Paradise Lake Sediment Bottom Hardness (2014-2017)	25

Paradise Lake “State of the Lake” (2017) Report: Evaluation of Laminar Flow Aeration, Bioaugmentation, and Biological Control for Improvements to Paradise Lake, Emmet and Cheboygan Counties, Michigan

Executive Summary

The overall condition of Paradise Lake is ranked in the top 20% of developed lakes of similar size in the state of Michigan (Restorative Lake Sciences). Paradise Lake is approximately 1,878 acres and has a maximum and average depth of 17 feet and 3.9 feet, respectively. The shoreline length is approximately 14.3 miles and the volume of the lake is approximately 10,358,982 m³. The watershed is approximately 16,685 acres, which is nearly 8.9 times the lake surface area.

Invasive species such as Eurasian Watermilfoil (EWM) can grow in moderate nutrient waters and thus are a challenge to the Paradise Lake ecosystem. In the West Basin of Paradise Lake, a basin-wide aeration system has been in operation for four years with good success and reduction of EWM and associated sediment muck. Protection of the 26 native aquatic plant species is paramount for the health of the lake fishery. The native aquatic plant diversity has increased since 2009 when milfoil covered numerous areas of the lake bottom and formed dense canopies. Weevil activity is still present on EWM stems throughout the lake but is strongest in the South region of the lake.

Nutrient loading from external sources into the lake water column is a growing concern for many lakes in Michigan. One area where significant nutrient loads end up in lakes is from water runoff following rain depending on the amount and intensity of rainfall, slope of downhill terrain, soil composition and its ability to absorb rain water, etc. These additional nutrients interfere with all invasive aquatic plant management programs, including herbicide treated lakes, which may require additional herbicide treatments. Many of these nutrients stay in suspension, get distributed to large areas of the lake and are quickly absorbed by aquatic vegetation, resulting in aquatic plant re-germination and/or regrowth. The aeration system is working hard to compensate for these inputs, but cannot process all of the external

nutrient loads, so we are directing additional future efforts to try to reduce external loading from the land which should ultimately improve the water quality in the future.

This report contains important 2017 data. Most notably was the reduction of soft mucky bottom on Paradise Lake as determined through whole-lake benthic scans using a scientific GPS system with specialized software. These maps show how the aeration system has naturally “biodegraded” and reduced the nutrient-rich organic lake-bottom muck in even a single year of operation. Continued use of the aeration system with added natural microbes and enzymes is critical for the future health of Paradise Lake. Additionally, RLS has recommended that a smaller-scale aeration system be installed at the northeast region of the lake to naturally reduce nuisance aquatic vegetation growth in that area which will hopefully be implemented in 2018.

2.0 Paradise Lake Water Quality Data (2017)

2.1 Water Quality Parameters Measured

There are numerous water quality parameters one can measure on an inland lake but several are the most critical indicators of lake health. These parameters include dissolved oxygen (measured in mg/L), water temperature (measured in °F), conductivity (measured in micro-Siemens per centimeter- $\mu\text{S}/\text{cm}$) pH (measured in standard units-SU), secchi transparency (in feet), ORP (in mV), total phosphorus and total nitrogen (both in mg/L), total dissolved solids (mg/L), total alkalinity (in mg/L CaCO_3), sediment organic matter (%), chlorophyll-*a* (in $\mu\text{g}/\text{L}$), and algal community composition.

Water quality was measured in the four deep basins of Paradise Lake on August 21, 2017 using a calibrated Eureka water sonde with parameter probes. Table 1 below demonstrates how lakes are classified based on key parameters. Paradise Lake would be considered mesotrophic (relatively productive) since it does contain ample nitrogen and aquatic vegetation growth but has good water clarity and moderate algal growth as well as low phosphorus concentrations.

2017 water quality data for Paradise Lake are shown below in Tables 2-6. Table 7 shows the relative algal community composition. Sampling sites are shown in Figure 1 below.

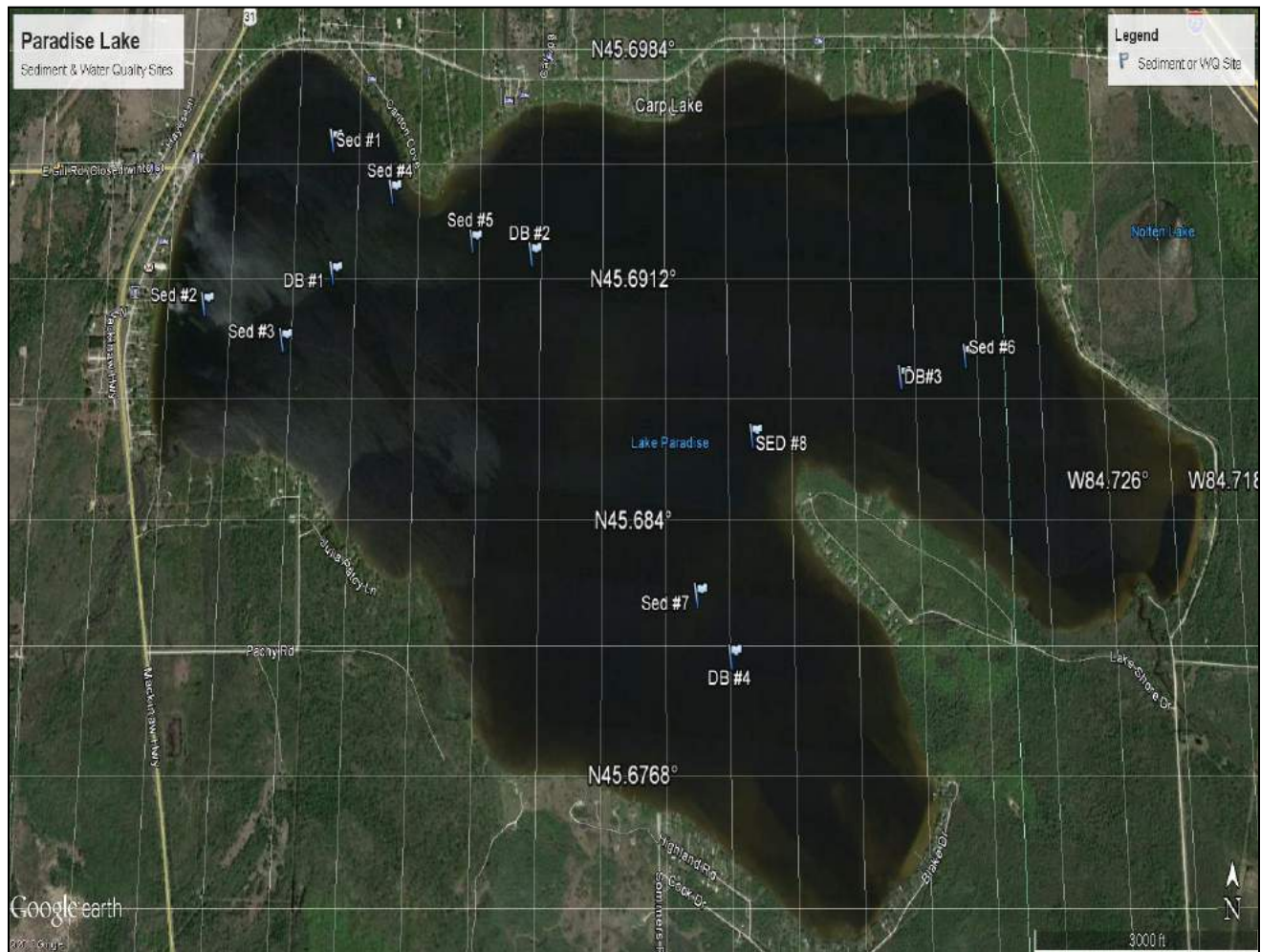


Figure 1. Water quality and sediment sampling locations in Paradise Lake, Emmet and Cheboygan Counties, Michigan (August 21, 2017).

Table 1. Lake trophic classification (MDNR).

Lake Trophic Status	Total Phosphorus ($\mu\text{g L}^{-1}$)	Chlorophyll-a ($\mu\text{g L}^{-1}$)	Secchi Transparency (feet)
Oligotrophic	< 10.0	< 2.2	> 15.0
Mesotrophic	10.0 – 20.0	2.2 – 6.0	7.5 – 15.0
Eutrophic	> 20.0	> 6.0	< 7.5

Table 2. Paradise Lake water quality parameter data collected over Deep Basin 1 on August 21, 2017.

<i>Depth ft.</i>	<i>Water Temp °F</i>	<i>DO mg L⁻¹</i>	<i>pH S.U.</i>	<i>Cond. µS cm⁻¹</i>	<i>TDS mg L⁻¹</i>	<i>ORP mV</i>	<i>Total Kjeldahl Nitrogen mg L⁻¹</i>	<i>Total Alk. mgL⁻¹ CaCO₃</i>	<i>Total Phos. mg L⁻¹</i>
0	74.5	9.1	8.6	233	88	110.5	0.6	90	<0.010
6	72.2	9.4	8.5	231	86	118.4	0.6	92	0.012
12	71.4	7.9	8.5	232	90	94.7	0.7	92	0.012

Table 3. Paradise Lake water quality parameter data collected over Deep Basin 2 on August 21, 2017.

<i>Depth ft.</i>	<i>Water Temp °F</i>	<i>DO mg L⁻¹</i>	<i>pH S.U.</i>	<i>Cond. µS cm⁻¹</i>	<i>TDS mg L⁻¹</i>	<i>ORP mV</i>	<i>Total Kjeldahl Nitrogen mg L⁻¹</i>	<i>Total Alk. mgL⁻¹ CaCO₃</i>	<i>Total Phos. mg L⁻¹</i>
0	75.5	9.5	8.5	230	94	123.6	3.0	90	0.057
5	72.4	9.8	8.5	229	90	124.8	4.0	92	0.058
10	71.5	9.1	8.4	232	90	105.4	4.1	95	0.057

Table 4. Paradise Lake water quality parameter data collected over Deep Basin 3 on August 21, 2017.

<i>Depth ft.</i>	<i>Water Temp °F</i>	<i>DO mg L⁻¹</i>	<i>pH S.U.</i>	<i>Cond. µS cm⁻¹</i>	<i>TDS mg L⁻¹</i>	<i>ORP mV</i>	<i>Total Kjeldahl Nitrogen mg L⁻¹</i>	<i>Total Alk. mgL⁻¹ CaCO₃</i>	<i>Total Phos. mg L⁻¹</i>
0	75.0	9.3	8.6	233	88	116.3	0.6	94	0.011
6	72.5	9.4	8.6	232	88	105.6	0.7	95	0.013
11	71.1	9.2	8.5	234	92	100.8	0.7	95	0.013

Table 5. Paradise Lake water quality parameter data collected over Deep Basin 4 on August 21, 2017.

<i>Depth ft.</i>	<i>Water Temp °F</i>	<i>DO mg L⁻¹</i>	<i>pH S.U.</i>	<i>Cond. µS cm⁻¹</i>	<i>TDS mg L⁻¹</i>	<i>ORP mV</i>	<i>Total Kjeldahl Nitrogen mg L⁻¹</i>	<i>Total Alk. mgL⁻¹ CaCO₃</i>	<i>Total Phos. mg L⁻¹</i>
0	74.9	9.3	8.5	233	85	126.8	0.6	92	0.010
7	72.3	9.9	8.5	232	90	120.1	0.7	90	0.010

Table 6. Paradise Lake sediment OM data collected around the lake in 2017.

<i>Sampling Site</i>	<i>Sediment % Organic Matter</i>
1	36
2	33
3	27
4	31
5	12
6	7
7	36
8	16

Table 7. 2017 phytoplankton data (Paradise Lake, Emmet and Cheboygan counties, MI).

Site	Mean # Blue-Green Algae	Mean # Green Algae	Mean # Diatoms
Deep Basin #1	0	29	92
Deep Basin #2	1	22	84
Deep Basin #3	2	63	107
Deep Basin #4	1	18	77

2.1.1 Dissolved Oxygen

Dissolved oxygen (DO) is a measure of the amount of oxygen that exists in the water column. In general, DO levels should be greater than 5 mg L⁻¹ to sustain a healthy warm-water fishery. DO concentrations may decline if there is a high biochemical oxygen demand (BOD) where organismal consumption of oxygen is high due to respiration. DO is generally higher in colder waters. DO was measured in milligrams per liter (mg L⁻¹) with the use of a calibrated dissolved oxygen meter. The DO concentrations in Paradise Lake during sampling ranged from 7.9-9.9 mg L⁻¹ during the 2017 sampling, which is favorable. During summer months, DO at the surface is generally higher due to the exchange of oxygen from the atmosphere with the lake surface, whereas DO is lower at the lake bottom due to decreased contact with the atmosphere and increased biochemical oxygen demand (BOD) from microbial activity. The DO concentrations in Paradise Lake likely change daily with water circulation patterns and other climatic events.

2.1.2 Water Temperature

The water temperature of lakes varies within and among seasons and is nearly uniform with depth under winter ice cover because lake mixing is reduced when waters are not exposed to wind. When the upper layers of water begin to warm in the spring after ice-off, the colder, dense layers remain at the bottom. This process results in a “thermocline” that acts as a transition layer between warmer and colder water layers. During the fall season, the upper layers begin to cool and become denser than the warmer layers, causing an inversion known as “fall turnover”. In general, shallow lakes such as Paradise Lake will not exhibit a major thermal stratification while deeper lakes may experience marked stratification. Water temperature was measured at depth (just above the lake bottom) in degrees Fahrenheit (°F) with the use of a calibrated submersible thermometer probe (Hanna Model HI 9828). Water temperatures during the 2017 sampling ranged between 75.5-71.1°F from the surface to the bottom which indicated high water

temperatures throughout the lake but was expected for mid-August. Differences in water temperatures among sampling sites may be due to variations in solar irradiance, aquatic plant biomass, or relative position to surface water movements.

2.1.3 Conductivity

Conductivity is a measure of the amount of mineral ions present in the water, especially those of salts and other dissolved inorganic substances. Conductivity generally increases as the amount of dissolved minerals and salts in a lake increases, and also increases as water temperature increases. The conductivity values for Paradise Lake during the 2017 sampling were moderate and ranged from 229-234 $\mu\text{S}/\text{cm}$ which is very favorable for an inland lake. Severe water quality impairments do not occur until values exceed 800 $\mu\text{S}/\text{cm}$ and are toxic to aquatic life around 1,000 $\mu\text{S}/\text{cm}$.

2.1.4 pH

Most Michigan lakes have pH values that range from 6.5 to 9.5. Acidic lakes ($\text{pH} < 7$) are rare in Michigan and are most sensitive to inputs of acidic substances due to a low acid neutralizing capacity (ANC). Paradise Lake is considered “slightly basic” on the pH scale. The pH of Paradise Lake during the 2017 sampling ranged from 8.4-8.6 S.U. which is ideal for an inland lake and also similar to previous years.

2.1.5 Water Clarity (Transparency) Data

Elevated Secchi transparency readings allow for more aquatic plant and algae growth. The transparency throughout Paradise Lake is adequate and was measured at around 8.0 feet on the day of sampling. This Secchi depth is adequate to allow abundant growth of algae and aquatic plants in the majority of the littoral zone of the lake. Secchi transparency is variable and depends on the amount of suspended particles in the water (often due to windy conditions of lake water mixing) and the amount of sunlight present at the time of measurement.

2.1.6 ORP (Oxidative Reduction Potential)

The oxidation-reduction potential (ORP or E_h) of lake water describes the effectiveness of certain atoms to serve as potential oxidizers and indicates the degree of reductants present within the water. In general, the E_h level (measured in millivolts) decreases in anoxic (low oxygen) waters. Low E_h values are therefore indicative of reducing environments where sulfates (if present in the lake water) may be reduced to hydrogen sulfide (H_2S). Decomposition by microorganisms in the hypolimnion may also cause the E_h value to decline with depth during periods of thermal stratification. The E_h values for Paradise Lake during the 2017 sampling ranged from 94.7-126.8 mV and were in the oxidative state. The high variability could be due to numerous factors such as degree of microbial activity near the sediment-water interface, quantity of phytoplankton in the water, or mixing of the lake water.

2.1.7 Total Phosphorus and Total Nitrogen

Total phosphorus (TP) is a measure of the amount of phosphorus (P) present in the water column. Phosphorus is the primary nutrient necessary for abundant algae and aquatic plant growth. TP concentrations are usually higher at increased depths due to higher release rates of P from lake sediments under low oxygen (anoxic) conditions. Phosphorus may also be released from sediments as pH increases. The mean TP concentration measured in all basins was around 0.024 mg L^{-1} , which is higher than the past few years but still considered below the eutrophic threshold for an inland lake. Total Kjeldahl Nitrogen (TKN) is the sum of ammonia (NH_4^+), and organic nitrogen forms in freshwater systems. Much nitrogen (amino acids and proteins) also comprises the bulk of living organisms in an aquatic ecosystem. Nitrogen originates from atmospheric inputs (i.e. burning of fossil fuels), wastewater sources from developed areas (i.e. runoff from fertilized lawns), agricultural lands, septic systems, and from waterfowl droppings. It also enters lakes through groundwater or surface drainage, drainage from marshes and wetlands, or from precipitation (Wetzel, 2001). In lakes with an abundance of nitrogen ($\text{N: P} > 15$), phosphorus may be the limiting nutrient for phytoplankton and aquatic macrophyte growth. Alternatively, in lakes with low nitrogen concentrations (and relatively high phosphorus), the blue-green algae populations may increase due to the ability to fix nitrogen gas from atmospheric inputs. Lakes with a mean TKN value of 0.66 mg L^{-1} may be classified as oligotrophic, those with a mean TKN value of 0.75 mg L^{-1} may be classified as mesotrophic, and those with a mean TKN value greater than 1.88 mg L^{-1} may be classified as eutrophic. The mean TKN concentration among all deep basins during the 2017 sampling was 1.5 mg L^{-1} which is higher than in previous years but still quite favorable.

2.1.8 Total Dissolved Solids

Total dissolved solids (TDS) are the measure of the amount of dissolved organic and inorganic particles in the water column. Particles dissolved in the water column absorb heat from the sun and raise the water temperature and increase conductivity. Total dissolved solids are often measured with the use of a calibrated meter in mg L^{-1} . Spring values are usually higher due to increased watershed inputs from spring runoff and/or increased planktonic algal communities. The TDS during the 2017 sampling ranged from 85-94 mg L^{-1} for the deep basins which is favorable but indicates the presence of TDS such as tannins and other substances that are a normal component of lake ecosystems.

2.1.9 Total Alkalinity

Total alkalinity is a measure of the hardness or softness of water. Lakes that have hard water have elevated alkalinity levels whereas lakes that have soft water have lower alkalinity levels. The term also refers to how buffered the water is from acidic inputs. The total alkalinity of Paradise Lake has ranged from 90-95 mg/L CaCO_3 (calcium carbonate) during the 2017 sampling. Paradise is a moderately soft water system which is common for inland lakes in northern Michigan.

2.1.10 Sediment Organic Matter

Organic matter (OM) contains a high amount of carbon which is derived from biota such as decayed plant and animal matter. Detritus is the term for all dead organic matter which is different than living organic and inorganic matter. OM may be autochthonous or allochthonous in nature where it originates from within the system or external to the system, respectively. Sediment OM is measured with the ASTM D2974 Method and is usually expressed in a percentage (%) of total bulk volume. Eight sediment samples were collected by hand with a hand-held (Ekman) dredge from eight areas throughout the lake. Each sediment sample was kept on ice prior to analysis in the laboratory for percentage of OM. The mean percentage of organic matter among all of the samples in 2017 was 24.8% which is similar to previous years.

2.1.11 Chlorophyll-*a* and Algal Community Composition

Water samples were collected via a composite sample from above the sediment to the surface using a composite sampler as described by Nicholls (1979). Samples were placed in dark brown polyethylene bottles and maintained at 4°C until microscopic analysis could be executed. All samples were preserved with buffered glutaraldehyde and analyzed within 48 hours of collection. Prior to microscopic analysis, each sample bottle was inverted twenty times prior to selection of each aliquot to evenly distribute phytoplankton in the sample. A calibrated Sedgwick-Rafter counting cell (50 mm x 20 mm in area with etched squares in mm) with 1-ml aliquots (n=5 per water sample) was used under a bright-field compound microscope to determine the identity and quantity of the most dominant phytoplankton genera from each Paradise Lake water samples (n=4). For identification of the individual dominant algal taxa, algal samples were keyed to genus level with Prescott (1970).

Chlorophyll-*a* is a measure of the amount of green plant pigment present in the water, often in the form of planktonic algae. High chlorophyll-*a* concentrations are indicative of nutrient-enriched lakes. Chlorophyll-*a* concentrations greater than 6 µg L⁻¹ are found in eutrophic or nutrient-enriched aquatic systems, whereas chlorophyll-*a* concentrations less than 2.2 µg/L are found in nutrient-poor or oligotrophic lakes. The mean chlorophyll-*a* concentrations for all basins during the 2017 season were around 3.0 µg/L which are moderate for an inland Michigan lake and slightly higher than the past few years.

The algal genera were determined from composite water samples collected over the deep basins of Paradise Lake in 2017 were analyzed with a compound bright field microscope. The genera present included the Chlorophyta (green algae): *Haematococcus* sp., *Chlorella* sp., *Scenedesmus* sp., *Ulothrix* sp., *Mougeotia* sp., and *Scenedesmus* sp.; the Cyanophyta (blue-green algae): *Gleocapsa* sp.; the Bascillariophyta (diatoms): *Stephanodiscus* sp., *Navicula* sp., *Synedra* sp., *Fragillaria* sp., *Tabellaria* sp., and *Cymbella* sp. The aforementioned species indicate a favorable algal flora and represent a good diversity of alga with an abundance of diatoms that are indicative of great water quality. Since the aeration program began, blue-green algae and green algae have declined and diatoms have increased.

2.2 Paradise Lake Aquatic Vegetation Data (2017)

The aquatic vegetation communities in Paradise Lake are diverse and have increased in biodiversity since control of the EWM began in the West Basin. Native aquatic plants such as pondweeds and native milfoils have increased and are a benefit to the lake fishery.

2.2.1 Paradise Lake Aquatic Vegetation Sampling Methods

A total of 220 sampling locations were selected in the West Basin in 2012-2017 and sampled again on August 21, 2017 for aquatic vegetation relative abundance. Each waypoint was geo-referenced with a Lowrance HDS 8 GPS unit. A combination of visual, rake tosses, and grab sample methods were used to sample the aquatic vegetation. An additional 600 sampling points were collected throughout the entire lake basin to determine the relative abundance of native aquatic plants. The primary objective of these surveys was to assess the conditions of the submersed aquatic plant communities before and after implementation of the laminar flow aeration system with bioaugmentation. The secondary objective was to assess the evidence of weevil damage throughout different regions of the lake and make management recommendations for future years.

The GPS Point-Intercept Survey method was developed by the Army Corps of Engineers to assess the presence and relative abundance of submersed and floating-leaved aquatic plants within the littoral zones of Michigan lakes. With this survey method, individual GPS points are sampled for relative abundance of aquatic plant species. Each macrophyte species corresponds to an assigned number designated by the MDEQ. In addition to the particular species observed (via assigned numbers), a relative abundance scale is used to estimate the percent coverage of each species within the GPS site.

2.2.2 Paradise Lake Native Aquatic Vegetation (2017)

The native aquatic vegetation present in Paradise Lake is essential for the overall health of the lake and the support of the lake fishery. The 2017 whole-lake aquatic plant survey and bottom scan determined that there were a total of 26 native aquatic plant species in Paradise Lake which is similar to previous years. These include 18 submersed species, 4 floating-leaved species, and 4 emergent species. This indicates a high biodiversity of aquatic vegetation in Paradise Lake and has remained stable over the past few years. The overall % cover of the lake by native aquatic plants is low relative to the lake size and thus these plants should be protected unless growing near swim areas at nuisance levels.

Table 8 below compares the relative abundance of all native aquatic plants in 2017 where as Table 9 shows the relative abundance of aquatic vegetation in the West Basin which is currently aerated. The most common native aquatic plants in Paradise Lake include the submersed Fern-leaf Pondweed (16.5%), Sago Pondweed (13.8%), Whorled Watermilfoil (11.5%), and Illinois Pondweed (10.2%). In the West Basin, the most common native aquatic plants were Whorled Watermilfoil (15.0%), White-stem Pondweed (12.5%), Fern-leaf Pondweed (10.5%), and Illinois Pondweed (10.0%). These pondweeds are excellent fish forage habitat and also do not produce surface canopies that can impair navigation, recreation, and other lake uses.

Table 8. Paradise Lake native aquatic plant species and relative abundance in 2017.

<i>Native Aquatic Plant Species</i>	<i>Aquatic Plant Common Name</i>	<i>2017 Abundance</i>
<i>Chara vulgaris</i>	Muskgrass	7.5
<i>Potamogeton illinoensis</i>	Illinois Pondweed	10.2
<i>Stuckenia pectinatus</i>	Sago Pondweed	13.8
<i>Potamogeton amplifolius</i>	Large-leaf Pondweed	8.8
<i>Potamogeton gramineus</i>	Variable-leaf Pondweed	9.4
<i>Potamogeton robbinsii</i>	Fern-leaf Pondweed	16.5
<i>Potamogeton pusillus</i>	Small-leaf Pondweed	2.8
<i>Potamogeton zosteriformis</i>	Flat-stem Pondweed	4.0
<i>Potamogeton natans</i>	Floating-leaf Pondweed	1.5
<i>Potamogeton praelongus</i>	White-stem Pondweed	9.9
<i>Potamogeton richardsoni</i>	Clasping-leaf Pondweed	0.7
<i>Zosterella dubia</i>	Water Stargrass	0.2
<i>Vallisneria americana</i>	Wild Celery	7.8
<i>Myriophyllum verticillatum</i>	Whorled Watermilfoil	11.5
<i>Najas guadalupensis</i>	Southern Naiad	5.8
<i>Elodea canadensis</i>	Common Elodea	2.4
<i>Ceratophyllum demersum</i>	Coontail	0.4
<i>Utricularia vulgaris</i>	Common Bladderwort	6.5
<i>Nymphaea odorata</i>	White Water lily	0.9
<i>Nuphar variegata</i>	Yellow Water lily	0.4
<i>Brasenia schreberi</i>	Watershield	1.5
<i>Lemna minor</i>	Duckweed	0.1
<i>Pontedaria cordata</i>	Pickerelweed	0.6
<i>Typha latifolia</i>	Cattails	1.1
<i>Decodon verticillatus</i>	Swamp Loosestrife	1.9
<i>Polygonum amphibium</i>	Water Smartweed	0.7

Table 9. Paradise Lake West Basin native aquatic plant species and relative abundance in 2017.

<i>Native Aquatic Plant Species</i>	<i>Aquatic Plant Common Name</i>	<i>West Basin % Abundance</i>
<i>Chara vulgaris</i>	Muskgrass	5.0
<i>3.3.0Stuckenia pectinatus</i>	Thin-leaf Pondweed	8.0
<i>Potamogeton zosteriformis</i>	Flatstem Pondweed	5.5
<i>Potamogeton robbinsii</i>	Fern-leaf Pondweed	10.5
<i>Potamogeton gramineus</i>	Variable-leaf Pondweed	8.0
<i>Potamogeton praelongus</i>	Whitestem Pondweed	12.5
<i>Potamogeton richardsonii</i>	Clasping-leaf Pondweed	6.0
<i>Potamogeton illinoensis</i>	Illinois Pondweed	10.0
<i>Potamogeton amplifolius</i>	Large-leaf Pondweed	7.0
<i>Vallisneria americana</i>	Wild Celery	6.5
<i>Myriophyllum verticillatum</i>	Whorled Watermilfoil	15.0
<i>Elodea canadensis</i>	Common Waterweed	2.0
<i>Utricularia vulgaris</i>	Bladderwort	5.0
<i>Najas flexilis</i>	Slender Naiad	7.5

2.2.3 Paradise Lake Invasive (Exotic) Aquatic Plants

The amount of Eurasian Watermilfoil (EWM; Figure 2) present in Paradise Lake varies each year and is dependent upon climatic conditions, especially runoff-associated nutrients. The August 21, 2017 survey revealed that approximately 170 acres of the lake was covered with milfoil. Approximately 70 acres of this is currently present in the West Basin of the lake. Paradise Lake did not contain any other invasive aquatic plant species in 2017. Figure 3 below shows the aquatic vegetation biovolume map which also shows the milfoil locations in red since they correspond with milfoil growth areas.



Figure 2. EWM bed locations in Paradise Lake (August 21, 2017).

2.2.4 Assessment of Weevil Damage on EWM Stems in Paradise Lake

The aquatic weevil, *Euhrychiopsis lecontei* naturally exists in many of our lakes; however, the lack of adequate populations in many lakes requires that they be implanted or stocked for successful control of the milfoil. The weevil feeds almost entirely on Eurasian Watermilfoil and will leave native aquatic species unharmed. The weevil burrows into the stems of the milfoil and removes the vascular tissue, thereby reducing the plant's ability to store carbohydrates (Newman et al. 1996). Eventually, the milfoil stems lose buoyancy and the plant decomposes on the lake bottom. Recent research has shown that the weevils require a substantial amount of aquatic plant biomass for successful control of Eurasian Watermilfoil. In addition, the weevils require adequate over-wintering habitat since they over-winter within shoreline vegetation. Lakes with sparse milfoil distribution and abundant metal and concrete seawalls are not ideal candidates for the milfoil weevil. There is an adequate amount of overwintering vegetation around the Paradise Lake shoreline to support a sustained weevil population.

The native weevil, *Euhrychiopsis lecontei* (Coleoptera: Curculionidae) has been shown to cause detrimental impacts on the exotic aquatic macrophyte Eurasian Watermilfoil (Creed et al. 1992, Creed and Sheldon 1995, Newman et al. 1996). The weevil life cycle consists of larval, pupae, and adult life stages, which all are involved in the destruction of the milfoil plants. In the initial stages of biological control, larvae are applied to the apical (top) portions of stems and destroy the vascular tissue (Creed and Sheldon 1993, 1994a, Newman et al. 1996), which significantly hinders stem elongation. During the pupation stage, stem vascular tissue is further destroyed during the construction of the pupal chamber (Creed and Sheldon 1993). During the adult phase, mature weevils feed on the milfoil leaves and stems (Creed and Sheldon 1993). Weevils were last stocked in Paradise Lake on July 26, 2013.

Observed impacts include the devascularization of stem tissue which causes buoyancy loss (due to a loss of stored CO₂ gases in stem epithelial cells) and photosynthetic growth inhibition of milfoil plants (Creed et al. 1992; Newman et al. 1996). Other herbivore species such as *Phytobius leucogaster* and *Acentria ephemerella* showed negligible results in the reduction of Eurasian Watermilfoil (Sheldon 1995; Creed and Sheldon 1994). It is possible that many water physical, chemical, and biological variables could affect the success of the *E. lecontei* control method. As a result, weevil evaluation treatments should minimize variables to the extent possible.

Laboratory Methods and Analyses

After milfoil stems were collected in the field and transported to the laboratory, they were cleaned and sorted prior to being inspected under the dissection microscope. Each milfoil stem that was collected at each of the three sampling sites was sorted and untangled prior to analysis under the microscope. In order to avoid washing any delicate life cycle stages (i.e. newly laid eggs or larvae) off of the exterior of the milfoil stems, washing of the stems was conducted only after an initial scan of the stem was completed and any of the associated weevil life cycle stages (if any present) were recorded. Milfoil stems that could not be immediately analyzed were placed between constantly moistened paper towels which were refrigerated to halt tissue degradation. If necessary, stems with thick encrustations of zebra mussels (*Dreissena polymorpha*) or other debris, were cleaned with deionized water and a steady stream of cold and lightly pressurized water. Whenever possible, tissue analyses occurred as soon as the dissection microscope was available after each sample. Stem damage parameters such as stem diameter was measured and recorded. Stem diameter was measured in (mm) with the use of a set of calibrated, digital calipers, which was re-calibrated between each reading for enhanced accuracy.

The condition of the milfoil stems (index of stem damage, Jermalowicz-Jones et al., 2007) was measured on each of the collected stems. The index of stem damage includes a stem tissue damage scale that ranges from 0 to 5. The index ranged from 0 - 5 with a value of "0" denoting no weevil damage visible, a "2" denoting the presence of larvae or eggs on or in the stem, a "3" indicated the presence of larvae in the stem tissues and vascular tissue damage, "4" indicated the presence of larvae or pupae and severe necrosis of the stem tissue, and a "5" denoted both severe tissue necrosis, weevil pupae or larvae, and the loss of foliar leaves. To assess for weevil damage, each individual milfoil stem was placed under the dissection microscope (first under the 10x objective power and then under the 20x objective power) to

look at the plant from the apical tip to the roots. Both overhead and base-lighting are used to illuminate the plant specimens and determine if weevil larvae or other life cycle stages are present in or on the individual stems. If weevil stages were located in or on the stems, they were recorded.

The data in Table 10 show that the stem diameter is highly variable and is not an adequate indicator of weevil damage. The stem damage index, however, showed more damage at the South region of the lake during the 2017 season. The damage is still present yet weaker than in previous years but continues to indicate that there is still weevil predation on EWM stems in Paradise Lake.

Figure 6 below shows the aquatic vegetation biovolume which corresponds to milfoil in all of the basins. Table 11 below demonstrates the changes in aquatic vegetation biovolume since 2014. As is evident, there has been an increase in low-growing favorable aquatic plants and a decline in the dense vegetation over time.

Table 10. Summary data table showing responses of EWM to weevil predation in September of 2017 in the West, South, and North basins of Paradise Lake.

<i>EWM Stem Sampling Location</i>	<i>2017 Mean Stem Diameter (mm)</i>	<i>2017 Mean Stem Damage Index (0-5)</i>
West Basin	1.5±0.1	1.4±0.2
South Basin	2.0±0.2	1.8±0.2
North Basin	1.7±0.2	1.5±0.9

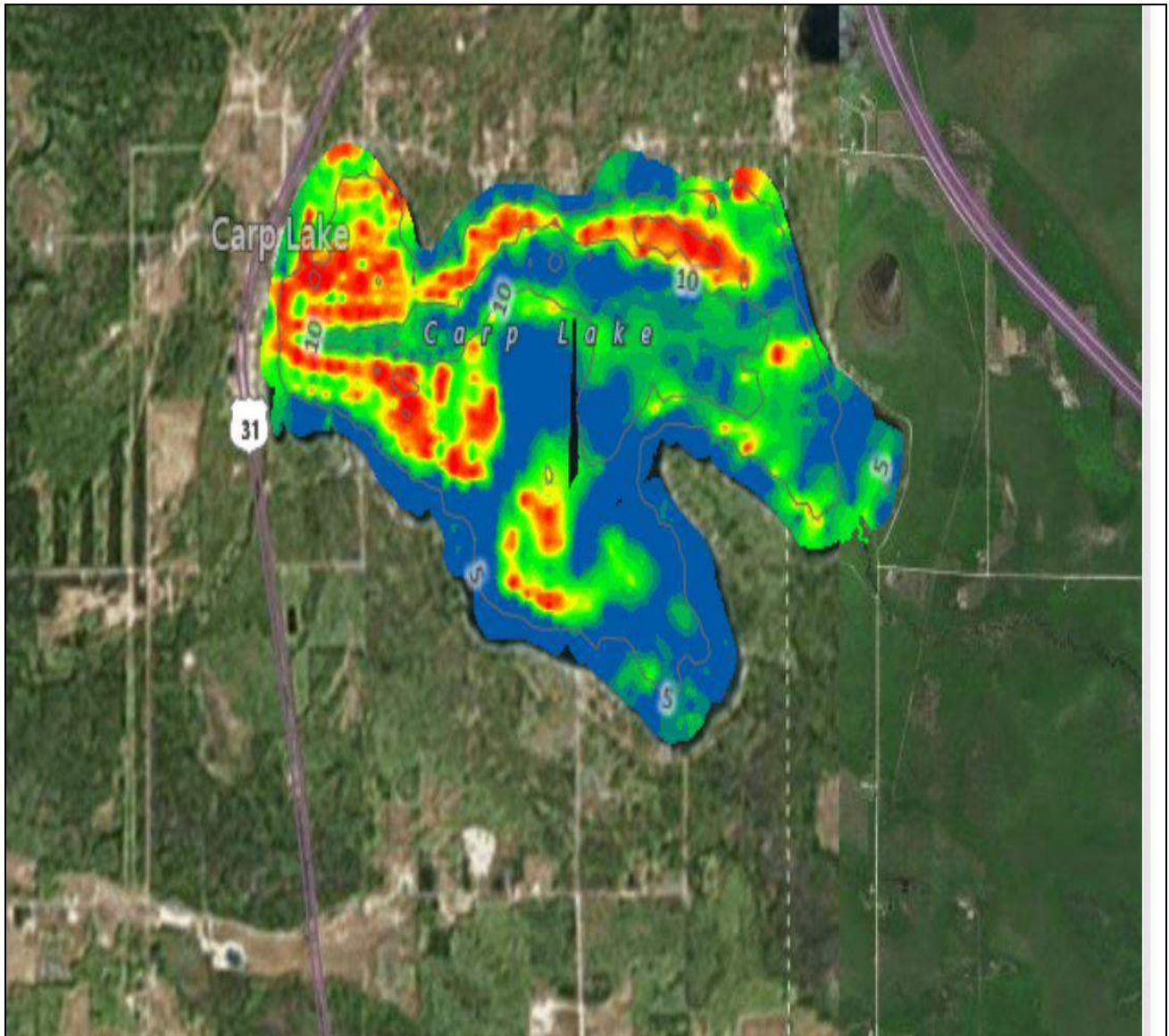


Figure 3. Paradise Lake 2017 aquatic vegetation biovolume map. Note: Red denotes high-growing aquatic vegetation and/or lily pads. Green denotes low-growing aquatic vegetation. Blue denotes a lack of aquatic vegetation.

Table 11. Aquatic Vegetation Biovolume Changes with Time in Paradise Lake.

% Cover Category	2014	2015	2016	2017
0-5%	25.43	30.49	31.04	29.84
5-20%	21.19	19.91	17.64	31.12
20-40%	19.67	14.36	18.76	17.24
40-60%	10.78	7.15	8.30	9.29
60-80%	7.48	6.46	6.71	8.18
>80%	15.64	21.63	17.56	4.32

2.3 Paradise Lake Sediment Muck Reduction Data

Restorative Lake Sciences conducted another whole-lake scan of the sediments in Paradise Lake. Figure 3 below shows the overall sediment bottom hardness categories and Table 12 shows the changes in sediment bottom hardness over the past few years. There has been a significant reduction in soft organic bottom and an increase in firm bottom substrate.

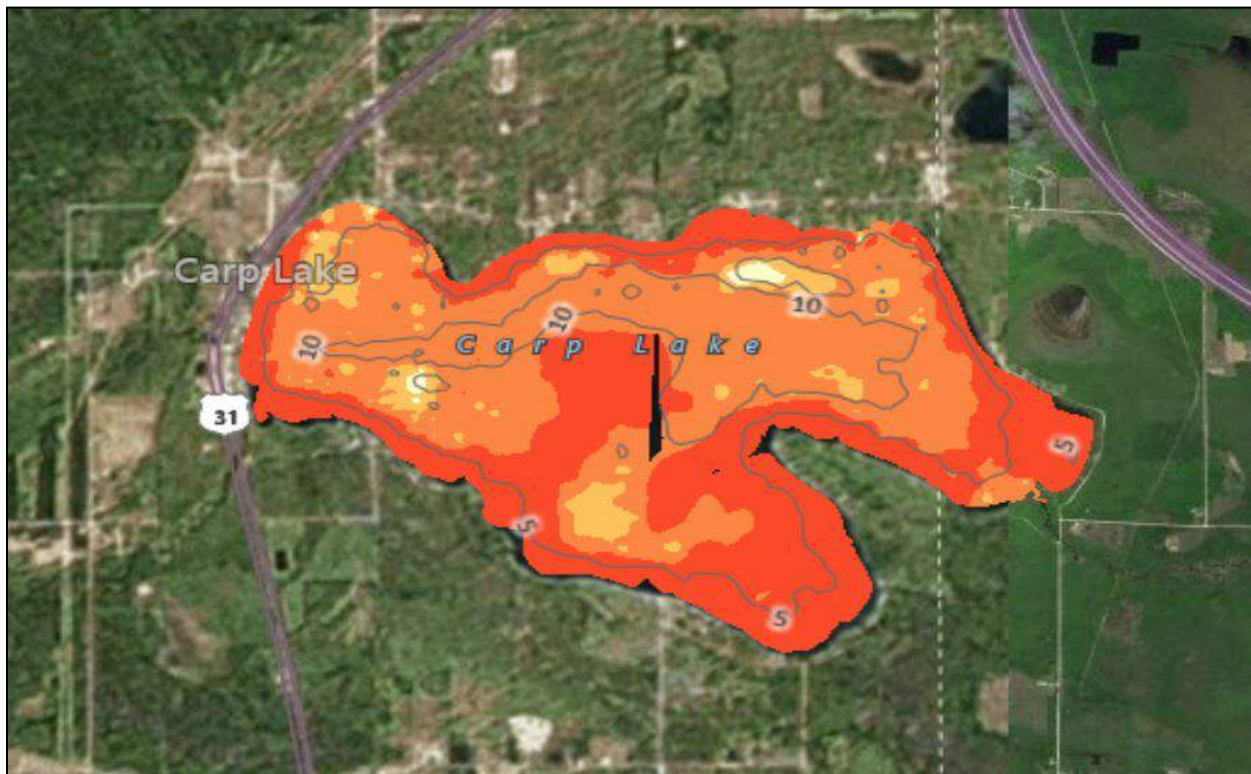


Figure 4. Sediment bottom hardness map of Paradise Lake (2017).

Table 12. Sediment Bottom Hardness Changes with Time in Paradise Lake.

Value	2014 %	2015 %	2016 %	2017%
<0.1 (softest)	0.04	0.19	0.12	0.02
0.1-0.2	1.17	1.50	39.44	0.59
0.2-0.3	52.70	38.34	38.20	26.19
0.3-0.4	26.90	41.83	35.85	45.26
>0.4 (hardest)	19.16	18.13	24.59	27.94

3.0 2018 MANAGEMENT RECOMMENDATIONS

Continuous aquatic vegetation surveys are needed to determine the precise locations of EWM or other problematic invasives in Paradise Lake as well as monitor the abundance and distribution of native aquatic plants throughout the lake. These surveys should occur in late-June to early-October of year for the best results.

The aeration system has reduced the overall growth and distribution of EWM present in the West Basin and the weevil activity is still apparent on EWM stems throughout the lake. RLS recommended an additional aeration system at the northeast region of the lake to reduce nuisance aquatic vegetation growth in that area. If that system is installed in 2018, RLS will be carefully monitoring the efficacy of that system by collecting many additional sampling point data sets in that region.

The nutrient concentrations in the lake are moderate and the majority of the aquatic plants obtain nutrition from the lake sediments. Fortunately, the soft bottom muck is declining and thus the sediments will not supply as much nutrient to vegetation in future years which should further reduce EWM and other nuisance growth. This loss of soft bottom is evidenced not only by declines in overalls ample organic matter content but also by the loss in soft bottom as evidenced by the bottom hardness maps with time

In conclusion, Paradise Lake is a healthy lake with high aquatic plant biodiversity, good water clarity, moderate nutrients, and a healthy lake fishery. Management of the EWM and protection of the water quality are paramount for the long-term health of the lake. Continued operation and monitoring of the West Basin aeration system is recommended along with dosing of microbes and enzymes. Expansion of the system is also recommended along the north shore pending approval of the system by the PLIB and the MDEQ.

4.0 GLOSSARY OF SCIENTIFIC TERMS

- 1) Biodiversity- The relative abundance or amount of unique and different biological life forms found in a given aquatic ecosystem. A more diverse ecosystem will have many different life forms such as species.
- 2) CaCO_3 - The molecular acronym for calcium carbonate; also referred to as “marl” or mineral sediment content.
- 3) Eutrophic- Meaning “nutrient-rich” refers to a lake condition that consists of high nutrients in the water column, low water clarity, and an over-abundance of algae and aquatic plants.
- 4) Mesotrophic- Meaning “moderate nutrients” refers to a lake with a moderate quantity of nutrients that allows the lake to have some eutrophic qualities while still having some nutrient-poor characteristics
- 5) Oligotrophic- Meaning “low in nutrients or nutrient-poor” refers to a lake with minimal nutrients to allow for only scarce growth of aquatic plant and algae life. Also associated with very clear waters.
- 6) Sedimentary Deposits- refers to the type of lake bottom sediments that are present. In some lakes, gravel and sand are prevalent. In others, organic muck, peat, and silt are more common.

5.0 SCIENTIFIC LITERATURE CITED

Creed, R. P., Jr., S.P. Sheldon, and D. M. Cheek. 1992. The effect of herbivore feeding on the buoyancy of Eurasian milfoil. *J. Aquat. Plant. Manage.* 30:75-76.

Creed, R. P., and S.P. Sheldon. 1994. The effect of two herbivorous insect larvae on Eurasian watermilfoil. *J. Aquat. Plant Manage.* 32: 21-26.

Creed, R.P., Jr., and S.P. Sheldon. 1995. Weevils and watermilfoil: did a North American herbivore cause the decline of an exotic plant? *Ecol. Appl.* 5: 1113-1121.

Newman, R. M., K.L. Holmberg, D. D. Biesboer, and B.G. Penner. 1996. Effects of a potential biocontrol agent, *Euhrychiopsis lecontei*, on Eurasian milfoil in experimental tanks. *Aquat. Bot.* 53: 131-150.

Nicholls, K.H. 1979. A simple tubular phytoplankton sampler for vertical profiling in lakes. *Freshwater Biology* 9:85-89.

Wetzel, R. G. 2001. *Limnology: Lake and River Ecosystems*. Third Edition. Academic Press, 1006 pgs.